

Port of Antwerp-Bruges

Road Show Debrecen

1st March 2024



Port of
Antwerp
Bruges



A global port
in the heart of Europe

One port
Two sites





2nd largest
port in **Europe**

13th largest
port **in world**



Number one **export**
port in Europe



20k **seagoing vessels**/year



Largest **car handling** port in Europe
3.56 mio new cars/year



48k **barges**/year



Largest integrated
chemical hub in Europe



Important **cruise** port in Benelux
1 mio passenger movements



15% of EU **gas** market
1,000 km **pipelines**



42k loaded cargo **trains**/year
80 destinations



Total throughput
271 mio tons/year



14,322
Hectares



1,400
Companies



€ 20,8 billion
Added value



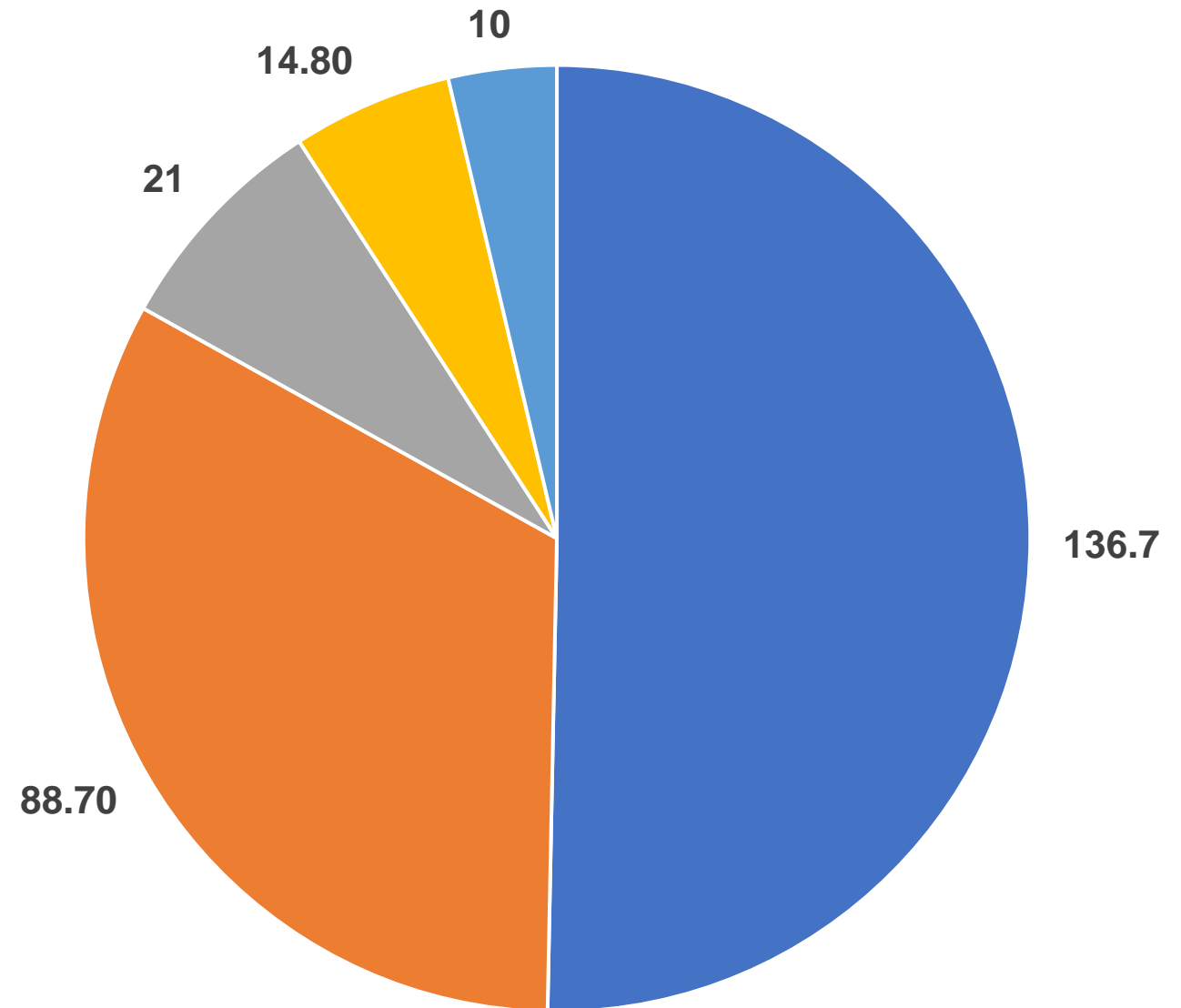
4.5%
GDP



164,000 **jobs**
Direct and indirect

Belgium's most important economic driver

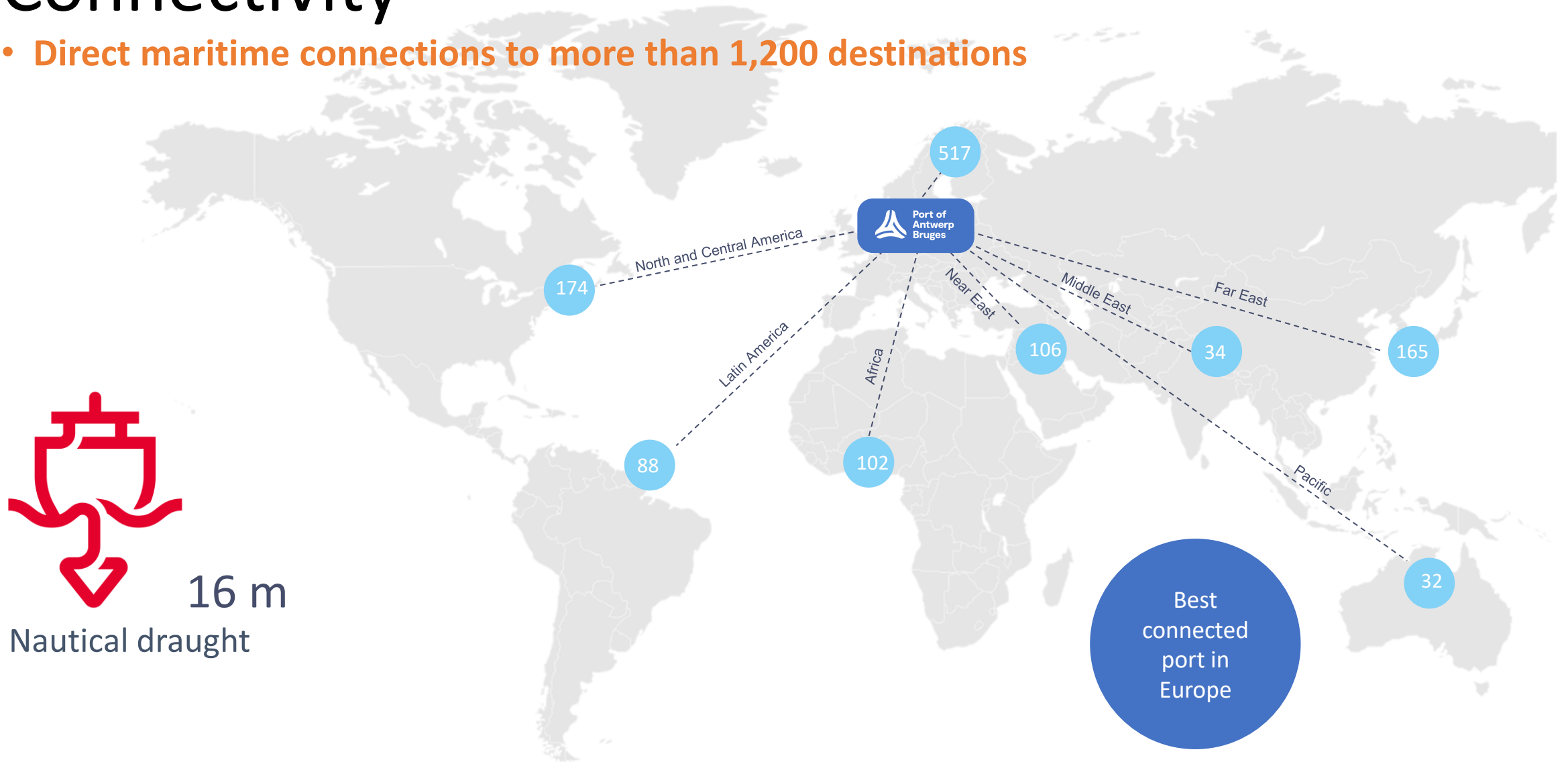
Throughput of 271 mio tonnes



- Containers
- Liquid bulk
- Roro
- Dry bulk
- Conventional general cargo

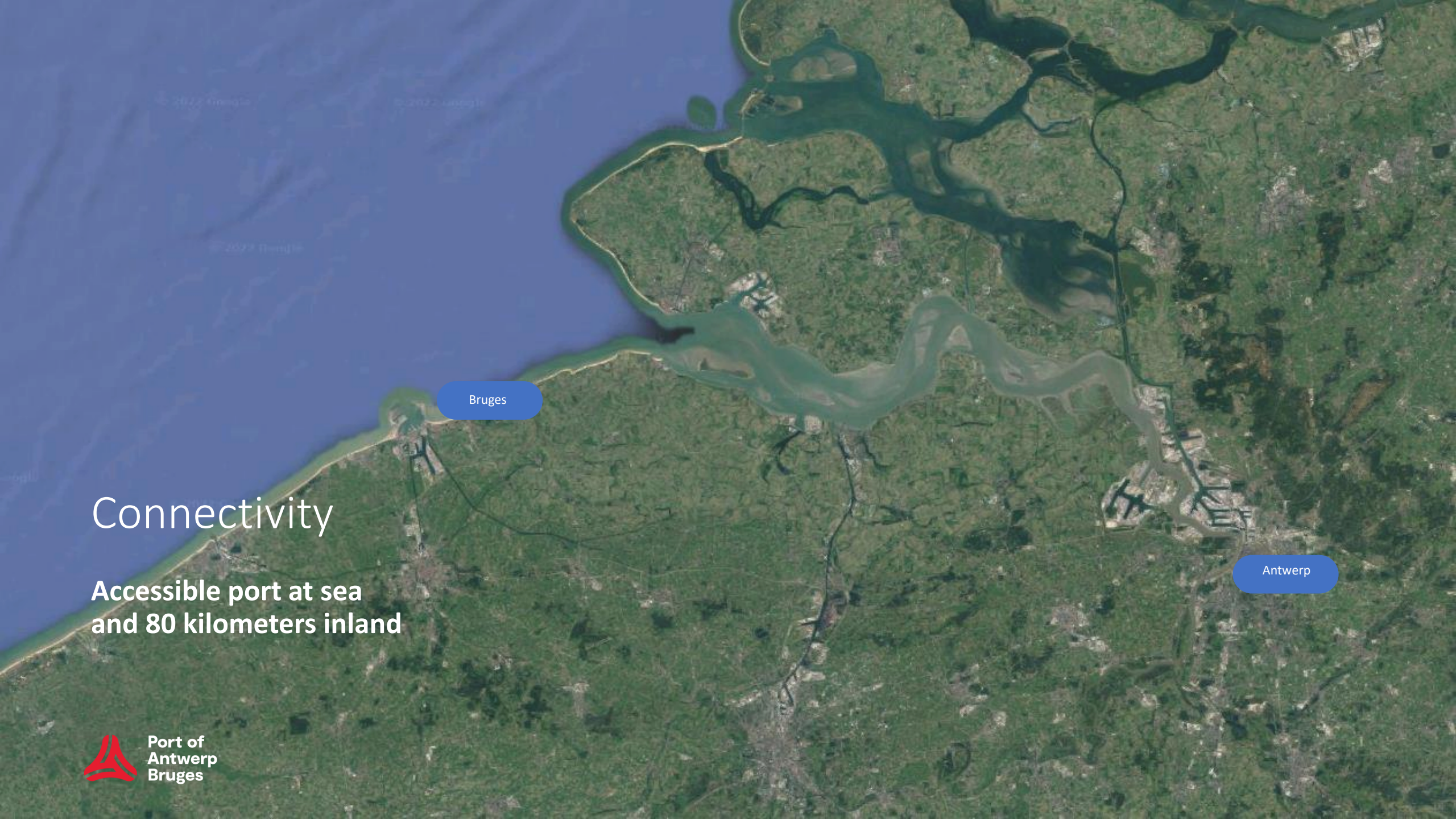
Connectivity

- Direct maritime connections to more than 1,200 destinations



16 m

Nautical draught



Bruges

Antwerp

Connectivity

**Accessible port at sea
and 80 kilometers inland**



Port of
Antwerp
Bruges

Connectivity

- **Multimodal gateway to the European hinterland**

Rail



Inland Navigation



Road



Shortsea



Pipeline



Port of
Antwerp
Bruges






60% of European
consumer market
within range of 500 km

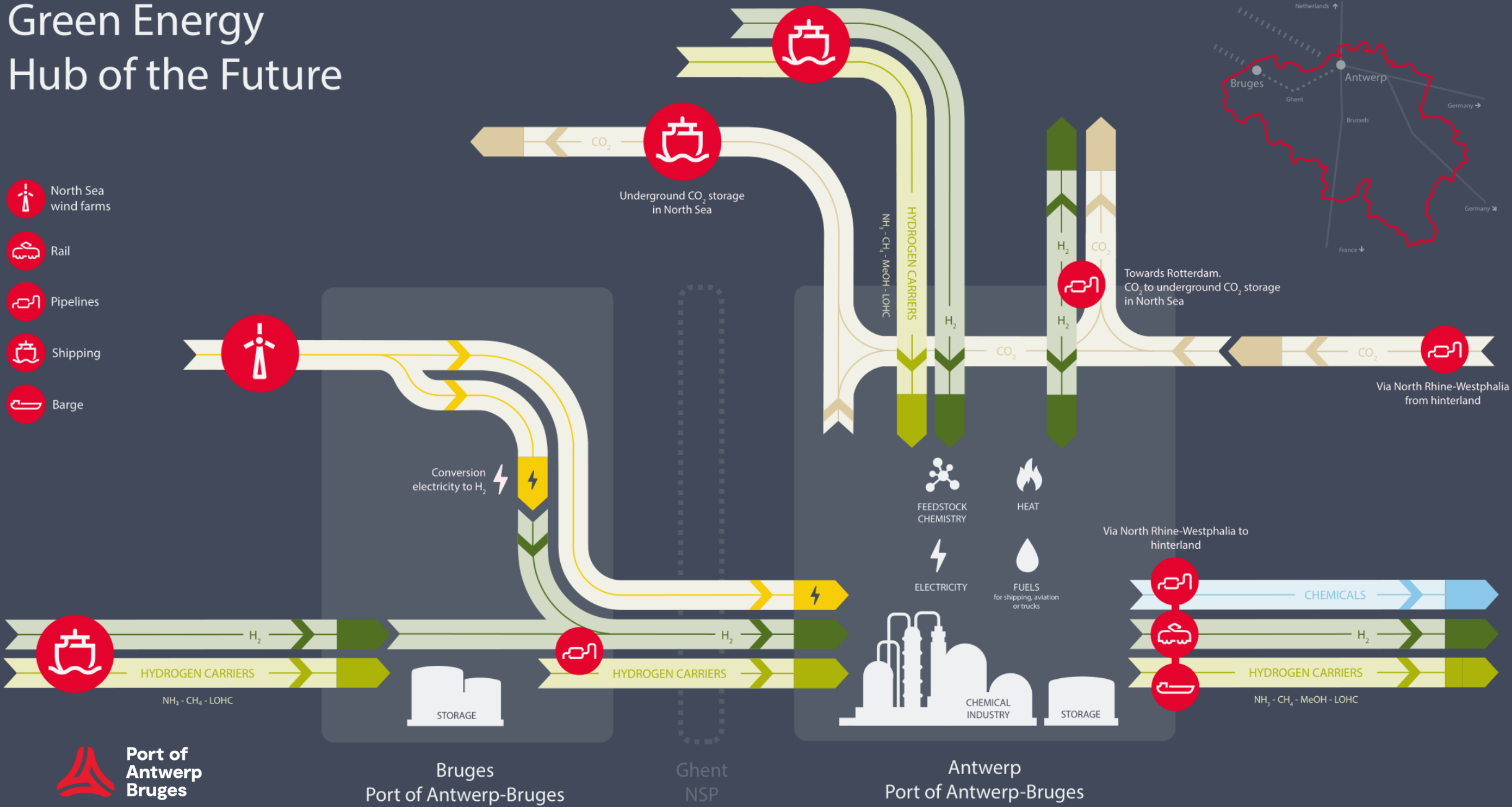
Frontrunner in energy transition



Port of
Antwerp
Bruges

Green Energy Hub of the Future

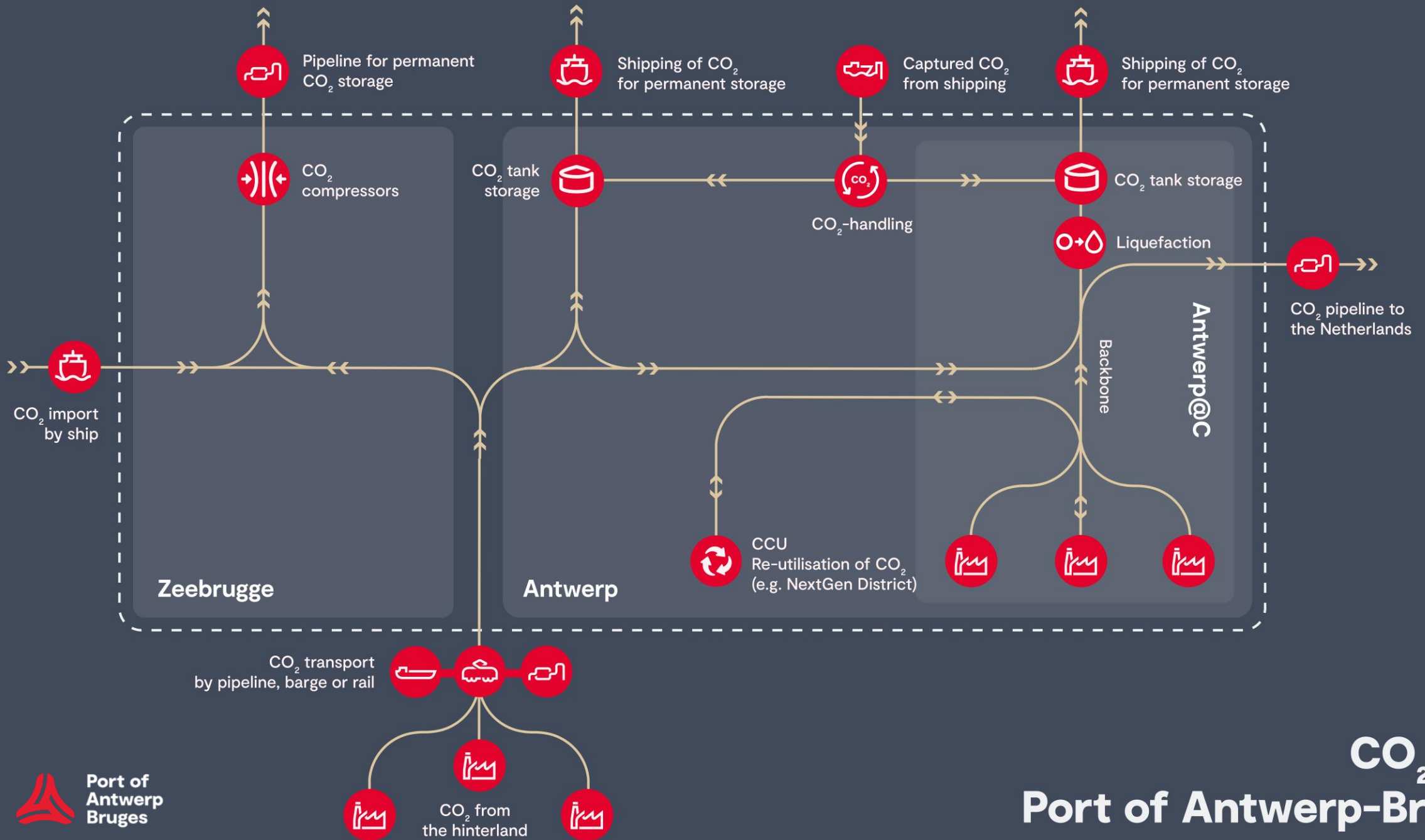
-  North Sea wind farms
-  Rail
-  Pipelines
-  Shipping
-  Barge



Bruges
Port of Antwerp-Bruges

Ghent
NSP

Antwerp
Port of Antwerp-Bruges



CO₂ hub Port of Antwerp-Bruges

Frontrunner digital Transition

5G

RX/seaport

NxtPort

Customs

Digital twin



Port of
Antwerp
Bruges



In tune with the world